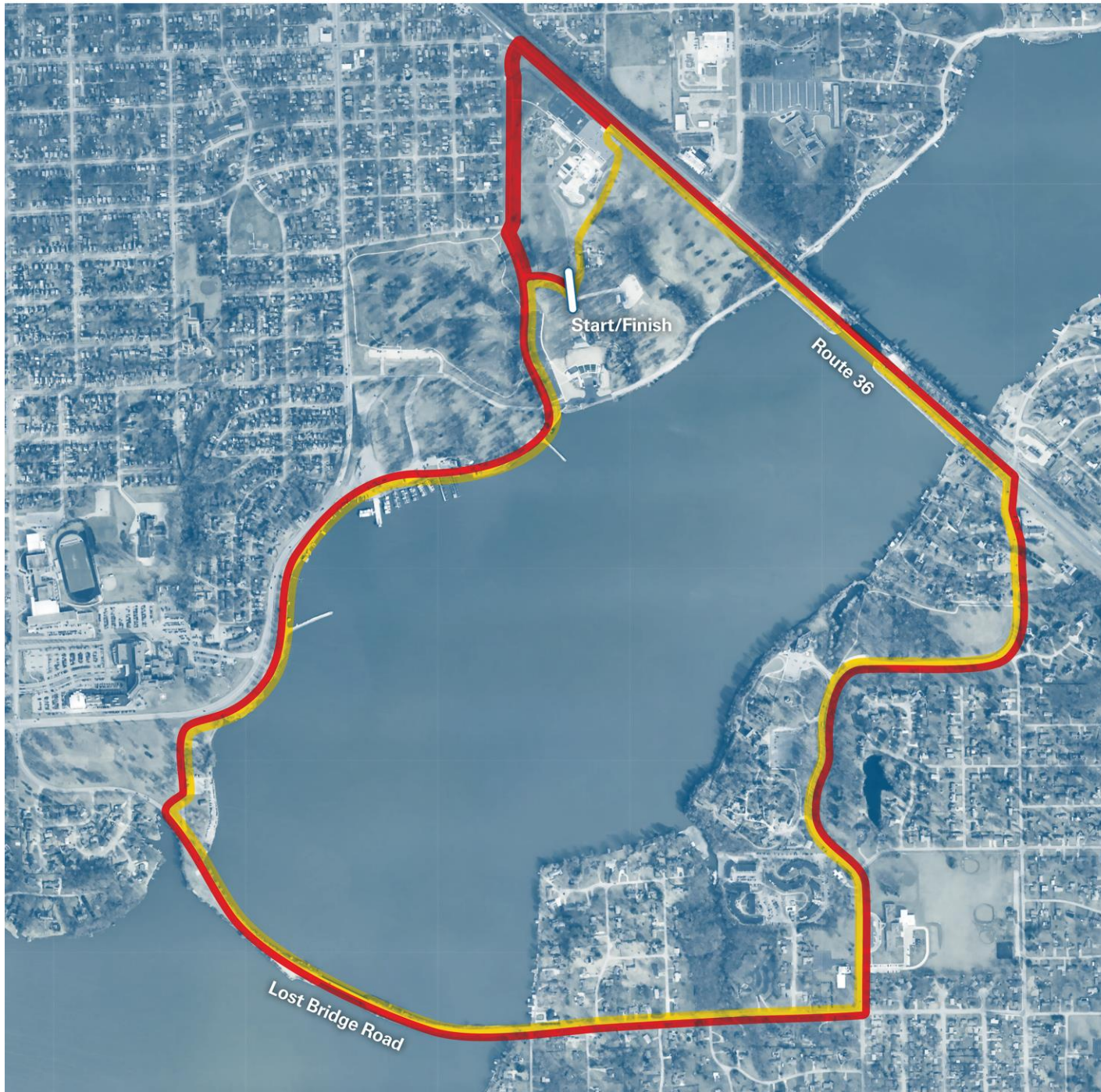


Shoreline Double Trouble



Start/Finish Pavilion I

15K heads West to Nelson Park Blvd.

Go left straight to the lake front path.

Go right, past the Beach House and onto Lost Bridge Rd.

Go left to Country Club Rd.

Go left (this is past the zoo) to Rt 36.

Go left to Splash Cove parking lot.

Enter parking lot, Go RIGHT heading west to the bike path (parallels Nelso Park Blvd.)

Go left to lake front path again.

Second Loop:

Lake front path past the Beach House again to Lost Bridge Rd.

Go left to Country Club Rd.

Go left to Rt 36.

Go left to Splash Cove.

Enter parking, a quick left to the utility road.

Go right on the utility road to the finish line.

● First Loop

● Second Loop